

Live Maps

for System Center
Operations Manager 2007 R2 v5.0

Installation Guide

CONTENTS

Contents 2

Introduction 4

 About This Guide 4

 Supported Products 4

 Understanding Live Maps..... 4

Live Maps Authoring Console..... 5

 System Requirements 5

 Installation..... 5

 Verification 5

 De-installation 5

Live Maps OpsMgr Extension 6

 System Requirements 6

 Installation..... 6

 Verification 6

 De-installation 6

Live Maps Web Console 7

 System Requirements 7

 Hardware:..... 7

 Software: 7

 Firewall Considerations 7

 Installation..... 7

 Verification 8

 Configuration..... 8

 De-installation 9

Live Maps Windows Gadget..... 9

 System Requirements 9

Installation.....	9
Verification	9
Configuration.....	10
De-installation	11
Show Affected Live Maps – Alert Task	11
Introduction	11
Installation and Configuration.....	12
De-installation	12
Upgrading from previous versions of Live Maps.....	12
Upgrade from Live Maps v2.x to Live Maps v5.0	12
Upgrade from Live Maps v3.x to Live Maps v5.0	13
Upgrade from Live Maps v4.x to Live Maps v5.0	13
Contact	13

INTRODUCTION

ABOUT THIS GUIDE

This guide describes the steps required to successfully install Live Maps for Operations Manager 2007 R2 (Live Maps).

SUPPORTED PRODUCTS

This version of the product is supported on Microsoft Operations Manager 2007 R2.

UNDERSTANDING LIVE MAPS

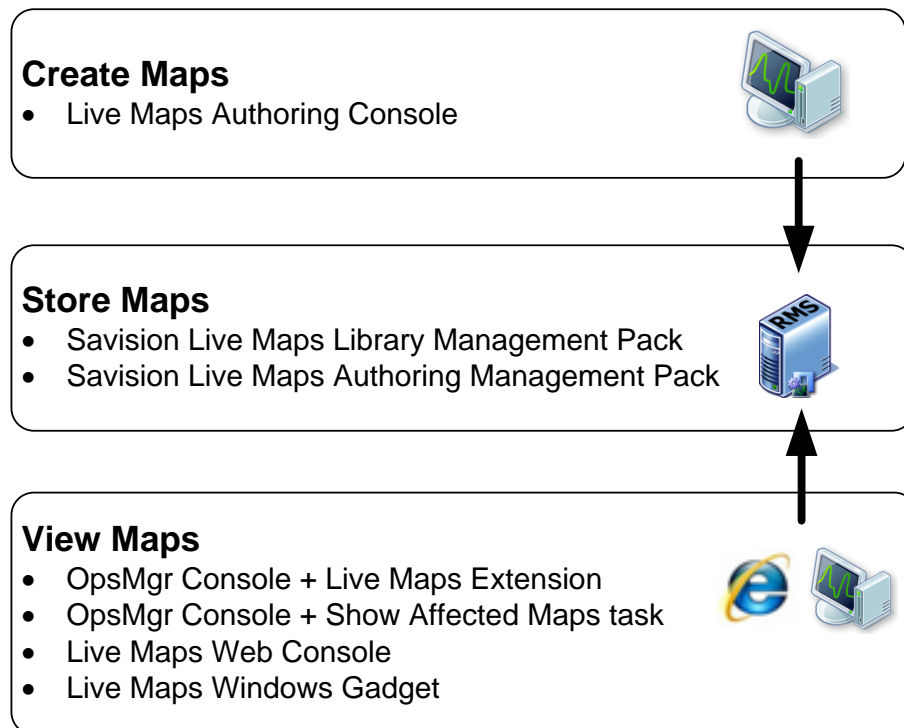
Live Maps uses the extensibility features of OpsMgr; it does not require a proprietary backend or agents. Views are created by an OpsMgr administrator using the Live Maps Authoring Console.

To create a new view, the OpsMgr administrator launches the Authoring Console which connects to the Root Management Server (RMS) of the management group.

When a view is saved, its configuration is stored in the online Live Maps Authoring management pack.

Views can be viewed in three ways: (i) from the OpsMgr operations console with the Live Maps OpsMgr Extension installed, (ii) with Microsoft Internet Explorer (version 6.0 and above) and (iii) with the Live Maps Windows Gadget (only in Windows Vista and Windows 7).

The Live Maps architecture is shown in the figure below:



LIVE MAPS AUTHORIZING CONSOLE

SYSTEM REQUIREMENTS

The Live Maps Authoring Console must be installed on a computer running the OpsMgr R2 Operations Console.

INSTALLATION

To install the Live Maps Authoring Console, follow these steps:

1. Logon to a computer running the OpsMgr Operations Console.
2. Run **Setup.LiveMaps.exe** from the installation CD/ISO image.
3. Select the **Install Live Maps Authoring Console** option under **Installation** and follow the installer instructions.

VERIFICATION

To verify the Live Maps Authoring Console installation, follow these steps:

1. Start the Live Maps Authoring Console (*Start → All Programs → Savision → Live Maps for OpsMgr R2 → Authoring Console*).
2. Every time the Live Maps Authoring Console is started, a connection logon dialog is displayed. Specify the name of the Root Management Server and click OK.
The first time the Live Maps Authoring Console is started, a valid license key needs to be entered before Live Maps can be used.
3. After connecting to the OpsMgr server, the Live Maps Authoring Console prepares the OpsMgr environment; this may take a few minutes. During this time, two management packs required by Live Maps are automatically imported: (i) the Savision Live Maps Library and (ii) the Savision Live Maps Authoring management pack.

DE-INSTALLATION

Remove the Live Maps Authoring Console via Programs and Features in the Control Panel (or via the Add/Remove Programs option in the Control Panel on computers running previous Windows versions).

Finish the de-installation by manually deleting the two Live Maps management packs according to the steps below.

Note: Removing the Live Maps management packs results in the loss of all maps created with the Live Maps Authoring Console!

1. Logon to a computer running the OpsMgr Operations Console.

2. Start the OpsMgr Operations Console (*Start → All Programs → System Center Operations Manager 2007 R2 → Operations Console*).
3. Go to the **Administration** space
4. Select **Management Packs** in the administration navigation tree
5. Select the **Savision Live Maps vX Authoring** management pack in the result pane and press the *Delete* button
6. Select the **Savision Live Maps Library** management pack in the result pane and press the *Delete* button

LIVE MAPS OPSMGR EXTENSION

SYSTEM REQUIREMENTS

The Live Maps OpsMgr Extension must be installed on a computer running the OpsMgr R2 Operations Console.

INSTALLATION

To install the Live Maps OpsMgr Extension, follow these steps:

1. Logon to a computer running the OpsMgr Operations Console.
2. Run **Setup.LiveMaps.exe** from the installation CD/ISO image.
3. Select the **Install Live Maps OpsMgr Extension** option under **Install** and follow the installer instructions.

VERIFICATION

To verify the Live Maps OpsMgr Extension installation, follow these steps:

1. Start the OpsMgr Operations Console (*Start → All Programs → System Center Operations Manager 2007 R2 → Operations Console*).
2. In the **Monitoring** space open a view created with the **Live Maps authoring** console.

DE-INSTALLATION

Remove the Live Maps OpsMgr Extension via Programs and Features in the Control Panel (or via the Add/Remove Programs option in the Control Panel on computers running previous Windows versions).

LIVE MAPS WEB CONSOLE

The Live Maps Web Console is an ASP.NET application and is installed on a server running IIS 6.0 or higher. The Live Maps Web Console supports Windows and Forms authentication. **For Windows authentication the Live Maps Web Console must be installed on the root management server.** For Forms Authentication it is advised to install the Live Maps Web Console on an IIS server secured with certificates (SSL).

SYSTEM REQUIREMENTS

HARDWARE:

Minimum:

- 1GB RAM
- 5 GB of available hard disk space
- 1.8 GHz

Recommended:

- 2GB RAM
- 20 GB of available hard disk space
- 2.8 GHz

SOFTWARE:

- .NET Framework 2.0
- .NET Framework 3.5 Service Pack 1
- Internet Information Server (IIS) 6.0 or higher
- ASP .NET 2.0

FIREWALL CONSIDERATIONS

The server hosting the Live Maps Web Console needs to be able to contact the root management server on port 5724.

INSTALLATION

To install the Live Maps Web Console, follow these steps:

1. Logon to the computer that will host the Live Maps Web Console.
2. Run **Setup.LiveMaps.exe** from the installation CD/ISO image.
3. Select the **Install Live Maps Web Console** option under **Install** and follow the installer instructions.

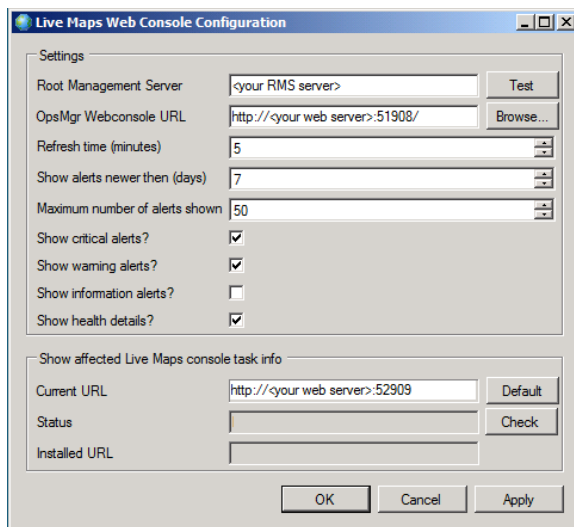
VERIFICATION

To verify the Live Maps Web Console installation, follow these steps:

1. Start the Live Maps Web Console (*Start → All Programs → Savision → Live Maps for OpsMgr R2 → Web Console*). Or, with Microsoft Internet Explorer, open the URL **http://<web server hosting Live Maps Web Console>:52909**.
2. Open a view created with the Live Maps Authoring Console.

CONFIGURATION

If necessary, modify the Live Maps Web Console configuration using the Web Console Configuration application (*Start → All Programs → Savision → Live Maps for OpsMgr R2 → Web Console Configuration*).



The Live Maps Web Console configuration settings are explained in the following table:

Setting	Description	Default Value
Root Management Server	Name of the OpsMgr Root Management Server	Set during installation
OpsMgr Web console URL	The URL to the OpsMgr web console you want to use for integration.	Set during installation
Refresh time	The number of minutes the application will wait before refreshing current view data	5
Show alerts newer then	Age limit (in days) of alerts displayed in the console	7
Maximum number of alerts shown	Maximum number of alerts displayed in the console	50
Show Critical Alerts	True if the critical alerts should be displayed in the web console alert list.	True

Setting	Description	Default Value
Show Warning Alerts	True if the warning alerts should be displayed in the web console alert list.	True
Show Information Alerts	True if the information alerts should be displayed in the web console alert list.	False
Show Health Details	Show health details in a drawing view or not	True

DE-INSTALLATION

Remove the Live Maps Web Console via Programs and Features in the Control Panel (or via the Add/Remove Programs option in the Control Panel on computers running previous Windows versions).

LIVE MAPS WINDOWS GADGET

SYSTEM REQUIREMENTS

The Live Maps Windows Gadget must be installed on a computer running the Windows Vista or Windows 7 Operating System.

INSTALLATION

To install the Live Maps Windows Gadget, follow these steps:

1. Logon to a computer with Windows Vista or Windows 7.
2. Run **Setup.LiveMaps.exe** from the installation CD/ISO image.
3. Select the **Install Live Maps Windows Gadget** option under **Install** and follow the installer instructions.

VERIFICATION

To verify the Live Maps Windows Gadget installation, follow these steps:

Windows Vista:

1. Start the Windows Sidebar (*Start* → *All Programs* → *Accessories* → *Windows Sidebar*).
2. Right-click in the Sidebar and select the menu item 'Add Gadget...'
3. Check if the gadget Live Maps for Operations Manager R2 is in the dialog.

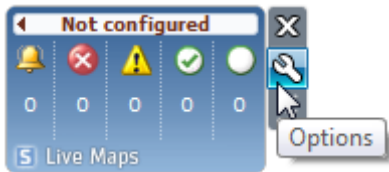
Windows 7:

1. Right-click on the desktop and select the menu item Gadgets
2. Check if the gadget Live Maps for Operations Manager R2 is in the dialog.

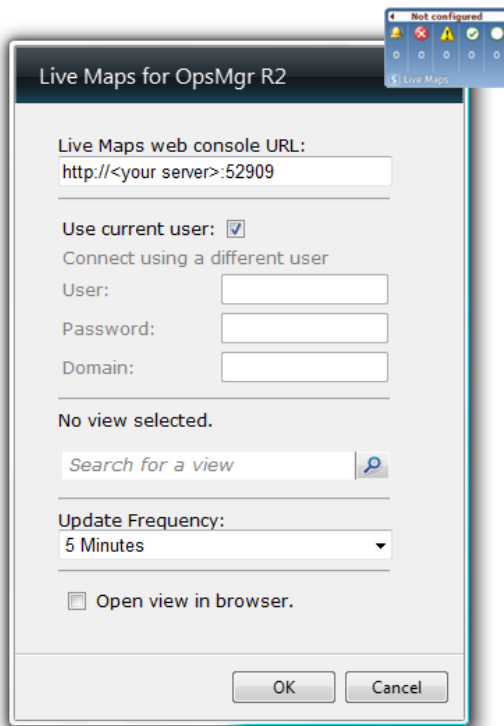
CONFIGURATION

After installation, the Live Maps gadget should be configured to show a summary of the states on a specific view on the Live Maps Web Console.

The Live Maps gadget configuration can be accessed by right-clicking the gadget and choosing 'Options' from the context menu. Alternatively, click on the Live Maps gadget so it has the 'focus', then click the spanner symbol to activate the options, like shown below:



A window similar to the one shown on the next page will open.



The Live Maps Windows Gadget configuration settings are explained in the following table:

Setting	Description	Default Value
Live Maps web console URL	The URL to the Live Maps web console you want to use.	http://<your server>:52909
Use current user	The credentials of the current user will be used to access the Live Maps web console.	True
User	The username that will be used to access the Live Maps web console.	-

Setting	Description	Default Value
Password	The password that will be used to access the Live Maps web console.	-
Domain	The domain that will be used to access the Live Maps web console.	-
Current view	The view on the Live Maps web console that will be accessed to populate the gadget.	No view selected
Search for a view	Specify (part of) the name of the view on the Live Maps web console and click the 'magnifier' to select the view to use.	-
Update Frequency	The number of minutes the application will wait before refreshing current view data	5
Open view in browser	When checked, the associated Live Maps web console view will open in the browser instead of the fly out window.	False

You can run multiple instances of the Live Maps gadget in the sidebar. You don't even need to have the OpsMgr Operations Console installed.

DE-INSTALLATION

Windows Vista:

1. Start the Windows Sidebar (*Start* → *All Programs* → *Accessories* → *Windows Sidebar*).
2. Right click in de Sidebar and select the menu item 'Add Gadget...'
3. Right click on the gadget Live Maps for Operations Manager R2 and select the menu item 'Uninstall'.

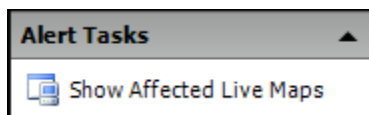
Windows 7:

1. Right click on the desktop and select the menu item Gadgets
2. Right click on the gadget Live Maps for Operations Manager R2 and select the menu item 'Uninstall'.

SHOW AFFECTED LIVE MAPS – ALERT TASK

INTRODUCTION

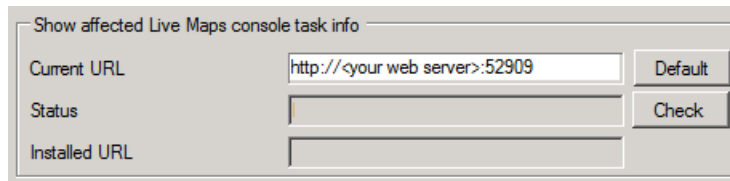
With Live Maps v5 functionality has been added to launch the Live Maps Web Console with the map that is affected by an alert shown on the OpsMgr Operations Console.



INSTALLATION AND CONFIGURATION

To install the 'Show Affected Live Maps' task, follow these steps:

1. Open the Live Maps Web Console Configuration application (*Start → All Programs → Savision → Live Maps for OpsMgr R2 → Web Console Configuration*).
2. Use the 'Check' button in the bottom half of the Configuration application to verify connectivity to the Web Server hosting the Live Maps Web Console and the Root Management Server:



Dialog box titled "Show affected Live Maps console task info". It contains three input fields: "Current URL" (with text "http://<your web server>:52909"), "Status", and "Installed URL". To the right of the "Current URL" field is a "Default" button. To the right of the "Status" field is a "Check" button.

When multiple instances of the Live Maps Web Console are installed, the Live Maps Web Console instance that is to be used can be specified as the 'Current URL'.

3. When the connectivity has successfully been verified, the button changes to 'Install'.
4. Use the 'Install' button to import the 'Savision Live Maps Tasks' Management Pack on the Root Management Server.

DE-INSTALLATION

Remove the 'Savision Live Maps Tasks' Management Pack by using the 'Uninstall' button in the Live Maps Web Console Configuration application, or use the procedure as described in the de-installation of the Live Maps Authoring Console to delete the 'Savision Live Maps Tasks' Management Pack.

UPGRADING FROM PREVIOUS VERSIONS OF LIVE MAPS

UPGRADE FROM LIVE MAPS V2.X TO LIVE MAPS V5.0

The Live Maps setup will install the Live Maps v5.0 environment next to an existing Live Maps v2 installation.

The Live Maps views that have been created with version 2 of Live Maps, for use with Operations Manager 2007 SP1, are not compatible with the format used in this version of Live Maps for Operations Manager 2007 R2.

A Live Maps view conversion tool is available at www.savision.com/download that will create a copy of each existing Live Maps v2 view in a Live Maps v5 compatible format. The original Live Maps v2 views will not be altered or deleted by the Live Maps view conversion tool.

The License Key used for Live Maps v2 will not work in Live Maps for Operations Manager 2007 R2. Please contact our sales team at sales@savision.com to request a new License Key for Live Maps for Operations Manager 2007 R2.

UPGRADE FROM LIVE MAPS V3.X TO LIVE MAPS V5.0

The Live Maps setup will upgrade an existing Live Maps v3 installation to a Live Maps v5.0 installation.

The Live Maps views that have been created with version 3 of Live Maps, for use with Operations Manager 2007 SP1, are fully compatible with the format used in this version of Live Maps for Operations Manager 2007 R2. No Live Maps view conversion is required.

The License Key used for Live Maps v3 will not work in Live Maps for Operations Manager 2007 R2. To request a new License Key for Live Maps for Operations Manager 2007 R2, contact the Savision Sales Team via email at sales@savision.com or use the contact form at www.savision.com/contact.

Note: After using the upgraded Live Maps Authoring Console for the first time, all Live Maps OpsMgr Extensions and Live Maps Web Consoles need to be upgraded also to function properly using the Live Maps v5 environment.

UPGRADE FROM LIVE MAPS V4.X TO LIVE MAPS V5.0

The Live setup will upgrade the existing Live Maps v4 installation to a Live Maps v5.0 installation.

The Live Maps views that have been created with version 4.x of Live Maps are fully compatible with the format used in this version of Live Maps v5.0 for Operations Manager 2007 R2. No Live Maps view conversion is required.

The License Key used for Live Maps v4.x will not work in Live Maps v5.0 for Operations Manager 2007 R2.

To request a new License Key for Live Maps for Operations Manager 2007 R2, contact the Savision Sales Team via email at sales@savision.com or use the contact form at www.savision.com/contact.

Note: After using the upgraded Live Maps Authoring Console for the first time, all Live Maps OpsMgr Extensions and Live Maps Web Consoles need to be upgraded also to function properly using the Live Maps v5 environment.

CONTACT

For additional information, go to www.savision.com/support or email support@savision.com.